

# PFLOW: People Flow Project

Y. Sekimoto, H. Kanasugi, T. Seto, Y. Fukushima,  
T. Kashiwama, A. Sudo, R. Shibasaki

[ <http://pflow.csis.u-tokyo.ac.jp> ]

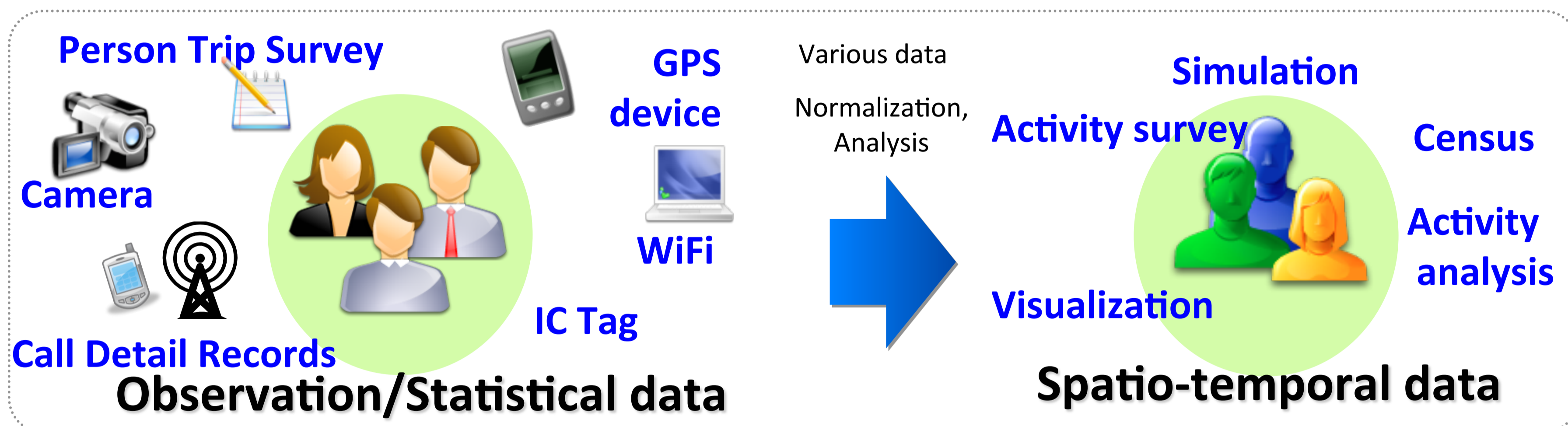
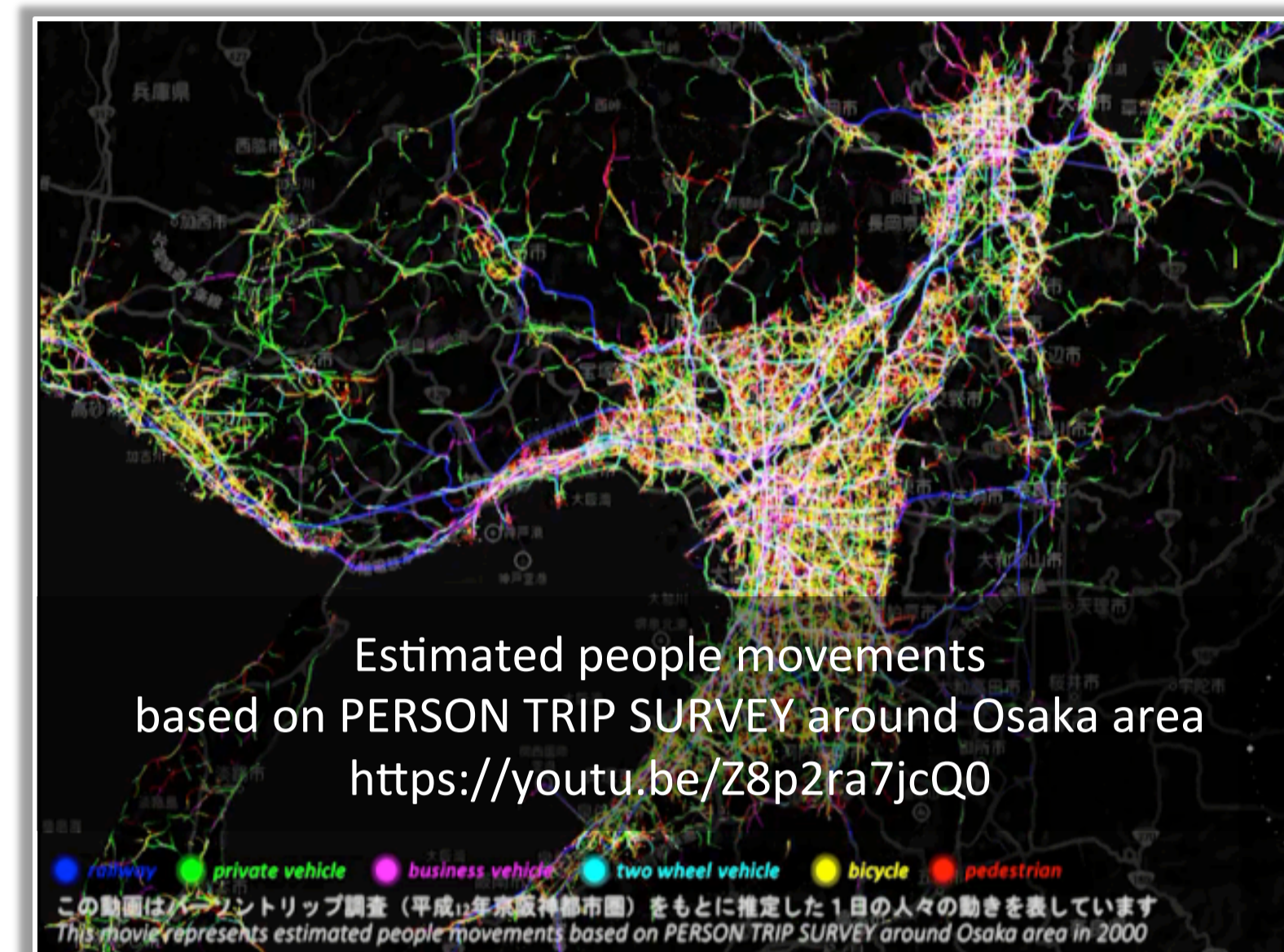


## What is PFLOW ??

Recently, monitoring dynamic changes in people flow has become more important, in order to mitigate secondary disasters following earthquakes, fires or other major events, as well as to mitigate congestion at nodes in terminal stations.

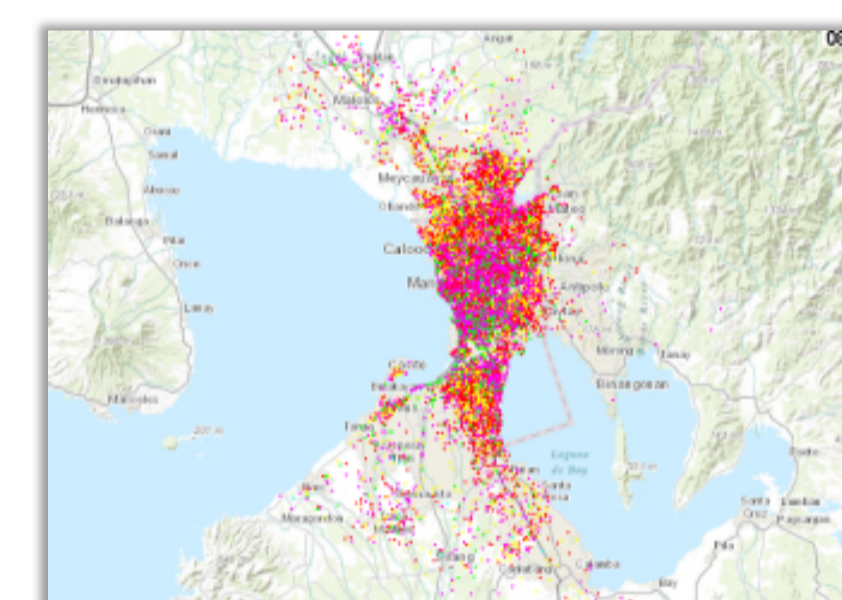
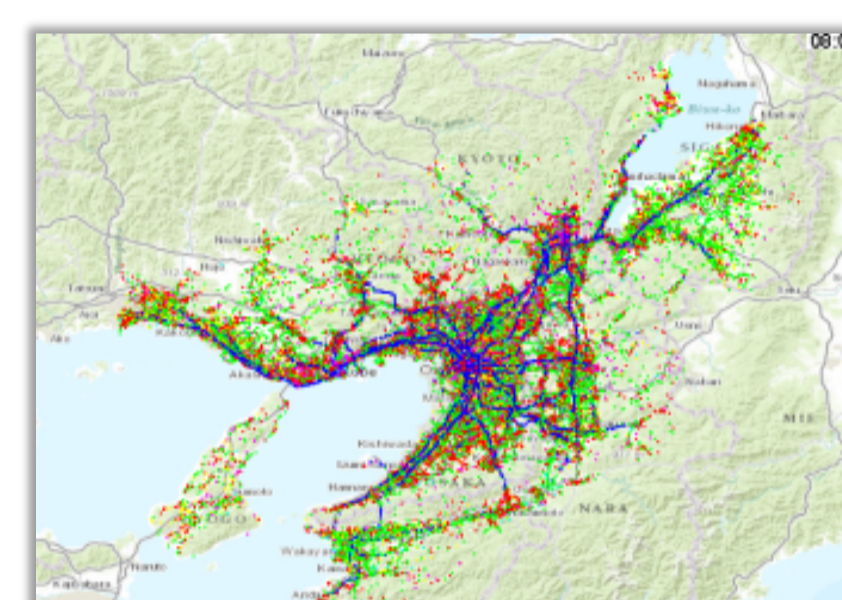
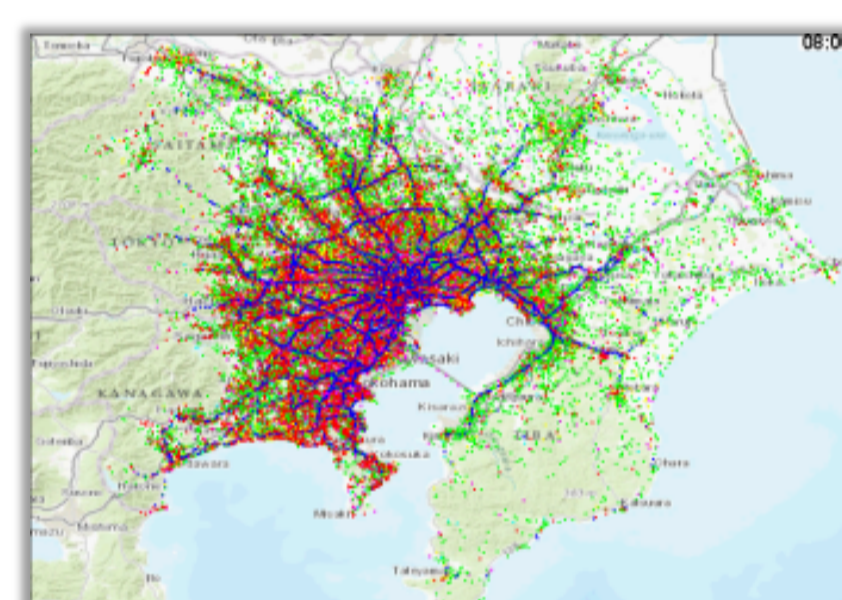
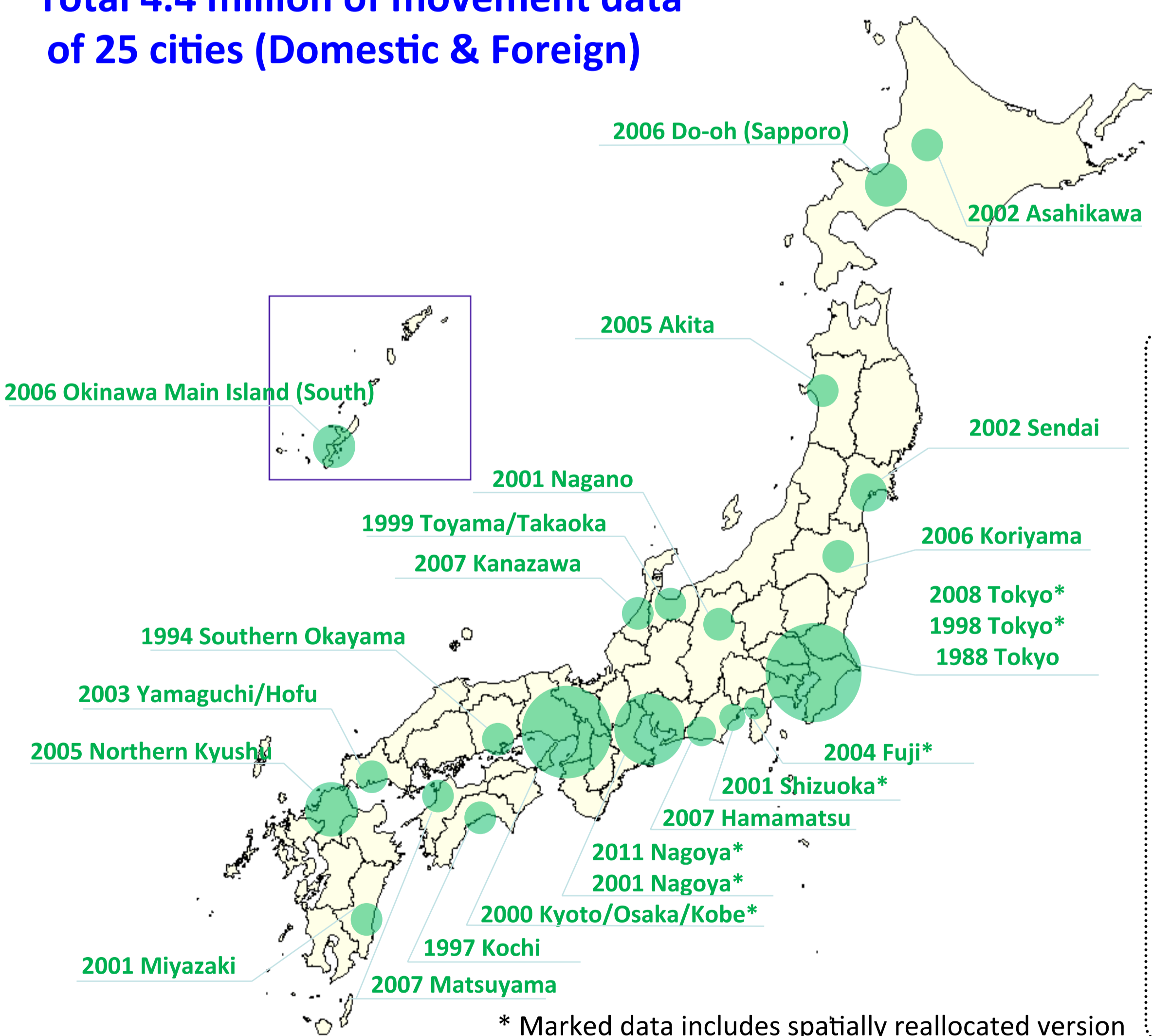
In technical terms, tracking mobile objects by GPS, tracking the number of people who are stationary by CCTV camera, tracking the number of passengers getting on and off according to the number of IC (integrated circuit) tickets through the automatic ticket gates, tracking the number of people who are stationary by the number of registered mobile phones at each base station, and tracking the hourly number of visitors to department stores enables us to measure people flow according to various dimensions.

Therefore, we start "People Flow Project (PFLOW)" which overviews data process technology, data quality and its common infrastructure for people flow on a large scale.

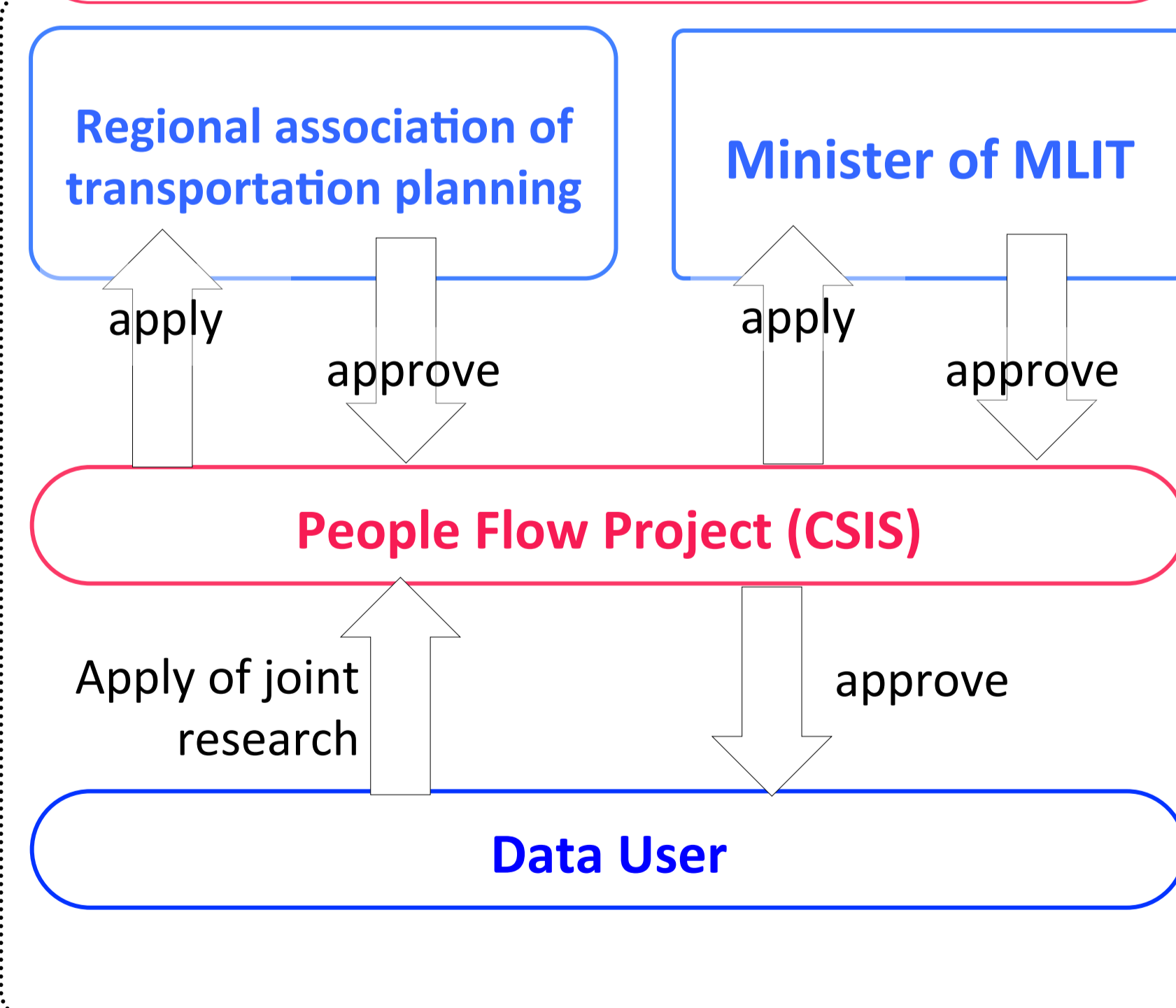


## PFLOW Data List

Total 4.4 million of movement data of 25 cities (Domestic & Foreign)



### Application procedure of data use



### List of Joint researches

- 1) Detection of Patterns from Trajectory Data (Kobe Univ.)
- 2) Research of city management platform for integration of dynamic data (Hitachi)
- 3) Privacy Protection for Spatial Analysis (Tsukuba Univ.)
- 4) Investigation of Built Environmental Characteristics in Megacities based on the data provided by Person Trip Survey (The Research Institute for Humanity and Nature)
- 5) The impact of the temporary evacuation area on the land prices (Nihon Univ.)
- 6) Development of spatial information for volcano risk management (National Research Institute for Earth Science and Disaster Prevention) and etc.

## PFLOW Workshop

We periodically have workshops, where we discuss wide-range issued about PFLOW since Oct of 2011. Now 20 institutes participate.

